



WA Key OSH Statistics

The data used in this report are derived from workers' compensation claims and include only those workers who are covered by the *Workers' Compensation and Injury Management Act 1981 (WA)*. Whilst workers' compensation claims data provide a good indication of work-related injury and disease levels; it should be noted that these figures are potentially understated given the number of self-employed workers, unpaid volunteers and students, Commonwealth Government workers, workers covered by Comcare and police officers (except for work-related fatalities) that are not covered by workers compensation and are thereby excluded from the data.

Data in relation to traumatic work-related fatalities are collected by WorkSafe and include all work-related deaths which include self-employed workers and bystanders.

Data notes

WorkSafe has now fully migrated to the updated coding classifications of Australian and New Zealand Standard Industrial Classification 2006 (ANZSIC 2006), Type of Occurrence Classification System Third Edition Revision 1 (TOOCS 3.1) and Australian and New Zealand Standard Classification of Occupations First Edition (ANZSCO). All statistical information published for the 2009-2010 data reporting year will reflect these classifications. Due to the differences in structure and definitions between each version/edition of the three coding classifications a break in series has occurred. To ensure data integrity comparisons should not be made between classification versions. This means time series data is only available up to and including the 2008-2009 data reporting year in the older classifications until such time that additional years of data have been recorded in the updated classifications to enable reliable comparative time series analysis.

Industry denominator data (numbers of employees and numbers of hours worked) used to calculate incidence and frequency rates are provided by the Australian Bureau of Statistics (ABS). Industry denominators coded to Australian and New Zealand Standard Industry Classification (ANZSIC) 1993 has been applied to claims data up until the 2007-08 lodgement year. However, due to implementation of a new ANZSIC version (ANZSIC 2006), denominators applicable to claims lodged in 2008-09 have been retrospectively converted to ANZSIC 1993. Although industry divisional level incidence and frequency rates are not impacted by this change, some variations are evident at the subdivisional level. As such, caution is advised when using subdivision rates in relation to the 2008-09 preliminary data; an asterisk symbol denotes subdivision with significant variations.

Preliminary data for 2009-10 is currently the latest data available due to a one year time lag (denoted by "p"). Data are subject to revision as claims information matures and is therefore considered a 'snapshot'.

Unless otherwise stated, data in this report refers to lost time injuries and diseases (LTI/Ds) in Western Australia where one or more days/shifts are lost from work and excludes journey claims between home and work, asbestos related diseases, and duplicated or disallowed claims.

To ensure confidentiality of workers' compensation claims information, incidences that total less than five are denoted by the data symbol '<5'.

Due to the high percentage of un-finalised claims concerning payments and days lost, data is subject to revision and likely under reported. Consequently, when looking at changes over time in time lost from work and claim costs, data has been excluded for the most recent preliminary year.

Caution needs to be exercised when using workers' compensation payments data as a measure of the cost of workplace injury and disease. The costs data collected are only those paid by the workers' compensation authority and will not include payments made by the injured worker which are not reimbursed by the workers' compensation authority.

'Total estimated cost' takes into account estimated and actual claim payments made for un-finalised claims and actual claim payments made for finalised claims in relation to compensation (such as weekly payments, lump sum payments, treatments etc) and non-compensation payments (such as legal costs, transport etc).

Claim payment information represents aggregated expenses attributed to the financial year in which a payment is made, regardless of the year in which the relevant claim is lodged.

The total number of days lost takes into account estimated and actual days lost for un-finalised claims and actual days lost for finalised. Claim data represents information on lost-time claims by the financial year in which the claim was lodged with the insurer. Estimates of days lost for un-finalised claims are revised as claims progress, therefore, as claims mature, the estimates are more reflective of the finalised days lost.

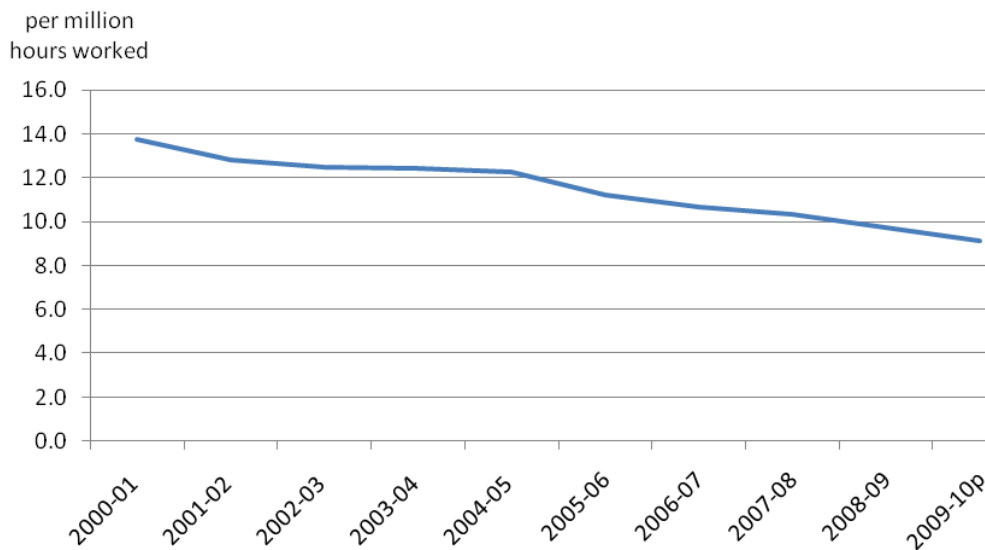
Claim data represents information on lost-time claims by the financial year in which the claim was lodged with the insurer. This is in contrast to claim payments, which reflect actual payments during a financial year regardless of when the claim was lodged.

Summary

- One worker is injured every thirty minutes seriously enough to take one or more days or shifts off work¹.
- One in 65 workers (covered by workers' compensation) experienced a lost time injury/disease during 2009-10p¹.
- On average a person is killed in WA as a result of a traumatic work-related incident every 18 days².
- 21 traumatic work-related fatalities were recorded in Western Australia during 2010-11.
- On average, 3,896 workers are being hurt each year to the extent that they require 60 or more days off work. In 2008-09, the average number of days lost for severe LTI/Ds was 269 days.
- In 2009-10p, there were 16,595 lost time injuries and diseases of one or more days/shifts lost recorded in Western Australia. This equates to an incidence rate of 1.55 per hundred workers.
- The industry division to record the highest frequency rate in 2009-10p was Arts and Recreation Services at 17.46. Agriculture, Forestry and Fishing recorded the highest incidence rate at 3.03.
- One in 90 women experienced a work-related lost time injury or disease requiring an absence of one or more days/shifts in 2009-10p³.

Frequency and incidence rates

Frequency rates (LTI/Ds per million hours worked): 2000-01 to 2009-10p



¹ based on workers' compensation claims data for 2009-10p

² based on the five year average for the period 2006-07 to 2010-11

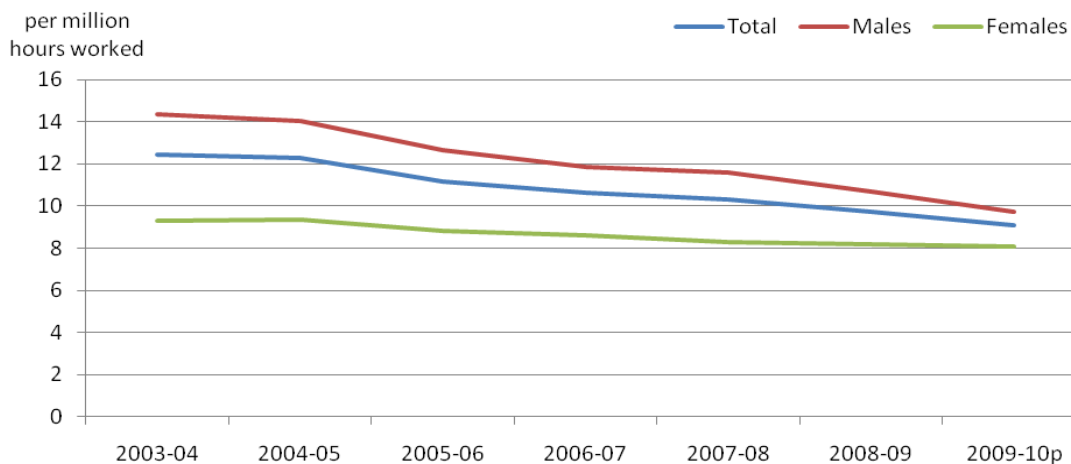
³ based on unpublished data from Australian Bureau of Statistics

Frequency of work-related injury and disease (LTI/Ds per million hours worked)

Year	Frequency rate
2000-01	13.77
2001-02	12.80
2002-03	12.46
2003-04	12.46
2004-05	12.28
2005-06	11.19
2006-07	10.64
2007-08	10.33
2008-09	9.73
2009-10p	9.11

- At a rate of 9.11 incidences per million hours worked, WA continues its downward trend recording its lowest frequency rate since 1988-89.
- In Western Australia the total rate of improvement in the frequency of lost time injuries and diseases (LTI/D) since the *Occupational Safety and Health Act 1984* came into effect in 1988-89 is 74.2%.
- The rate of improvement over the five years from July 2005 to June 2010 is 18.6%.
- Preliminary data for 2009-10 (the most recent year available), shows a 6.4% decrease in the frequency of LTI/Ds compared to the previous year. However, subsequent revisions to the data may result in adjustments to figures for the most recent years.

Lost time injury and disease incidence rates by gender: 2003-04 to 2009-10p



- 1.55 incidences per hundred workers was recorded during 2009-10p, a 7.7% improvement on the previous year (1.68 in 2008-09).
- Male incidence rates have fallen 32.6% from 2.8 incidences per hundred workers in 2003-04 to 1.9 in 2009-10p.

- Though not as large as the reduction in male incidence rates, female incidence rates also recorded a fall of 11.7% from 1.3 in 2003-04 to 1.1 in 2009-10p.

LTI/Ds 60+ days lost

Lost time injuries and disease by number, total days lost and average duration: 2005-06 to 2009-10p

Year	LTI/Ds (60+ days lost)	Frequency Rate	Incidence Rate	Avg duration(a)	Proportion of all LTI/Ds
2005-06	3469	2.15	0.37	260	19.2%
2006-07	3572	2.11	0.36	261	19.8%
2007-08	3981	2.27	0.39	270	21.9%
2008-09	4171	2.31	0.40	269	23.7%
2009-10p	4289	2.35	0.40	-	25.8%

- a) average duration data is not provided for the most recent year due to the high proportion of un-finalised claims in that year.

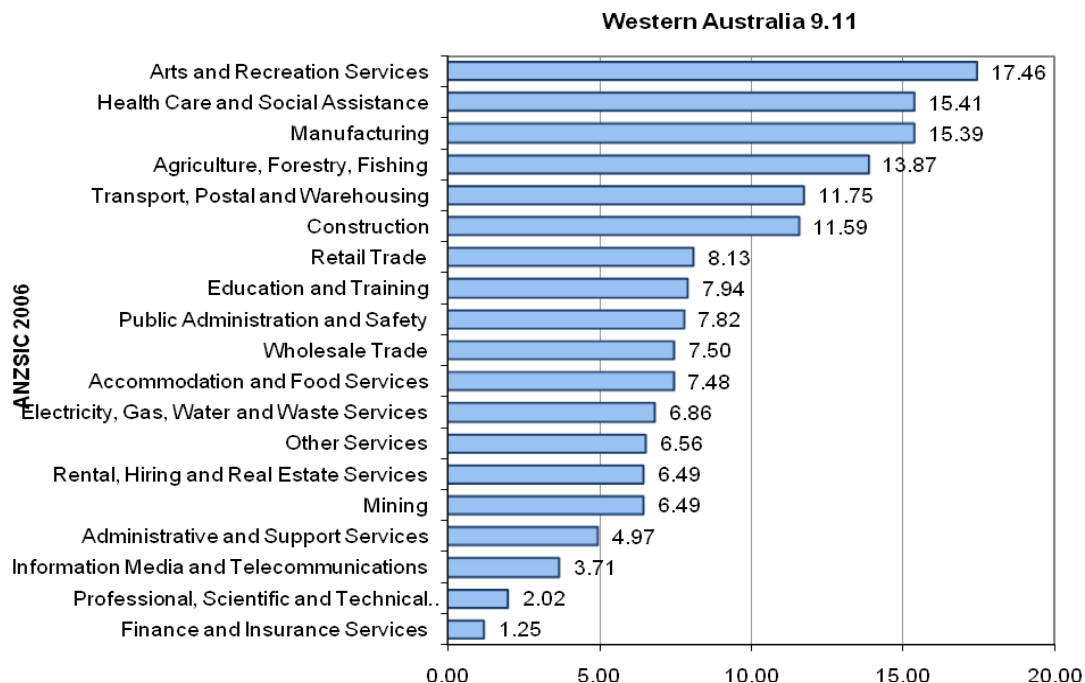
- The frequency rate for severe incidences has risen consistently between 2006-07 and 2008-09. Preliminary data for 2009-10 indicates a continuation in trend reporting the highest rate in six years.
- In terms of proportions, over a quarter of all LTI/Ds for 2009-10p were severe injuries (60 days/shifts lost or more). The proportion of severe incidences has increased each year from 19.2% in 2005-06 to 25.8% in 2009-10p.
- Preliminary figures indicate the Healthcare and Social Assistance industry division recorded the highest number of severe LTI/Ds (60 days/shifts lost or more) during 2009-10p at 719 (or 16.7%).
- The second highest during the same period was Construction at 562 (or 13.1%), Manufacturing was ranked third with 535 (or 12.4%).
- Severe cases in relation to females accounted for 23.6% of total female LTI/Ds in 2005-06. In 2009-10p the proportion has grown to 29%.
- Around 12% more female were in the workplace (covered by the *Workers' Compensation and Injury Management Act 1981*) during 2009-10 compared to 2005-06.⁴
- In 2005-06 one in every 345 female workers sustained a severe LTI/D - this figure dropped to one in 308 during 2009-10p.
- Severe male LTI/Ds accounted for 17.3% of all male LTI/Ds in 2005-06 compared to 24.3% in 2009-10p.
- 15% more males were in the workplace during 2009-10p (covered by the *Workers' Compensation and Injury Management Act 1981*) than in 2005-06. This equates to one severe LTI/D in every 215 male workers in 2009-10 (down from 228 in 2005-06).

⁴ based on unpublished data from Australian Bureau of Statistics

Industry rates

- At 17.46 the Arts and Recreation services industry division had the highest frequency rate of all the divisions in 2009-10 (preliminary), followed by Health Care and Social Assistance at 15.41.
- In terms of numbers it was Health Care and Social Assistance division that recorded the highest number of LTI/Ds (2,504) closely followed by Manufacturing (2,481).
- The subdivision to record the highest frequency rates during 2009-10p was Fabricated Metal Product Manufacturing with 54.99 LTI/Ds per million hours worked. Second was Aquaculture at 39.83 followed by Agriculture, Forestry and Fishing Support Services at 34.47.
- The following subdivisions recorded the most LTI/Ds during 2009-10p: Constructions Services (1,292), Hospitals (1,081), Preschool and School Education (1,056), Residential Care Services (790) and Fabricated Metal Product Manufacturing (623).
- Coincidentally, the same top four subdivisions in the same order also recorded the highest number of severe LTI/Ds during 2009-10p. The fifth highest in this instance was Road Transport.

Frequency rate by ANZSIC 2006 industry division: 2009-10p

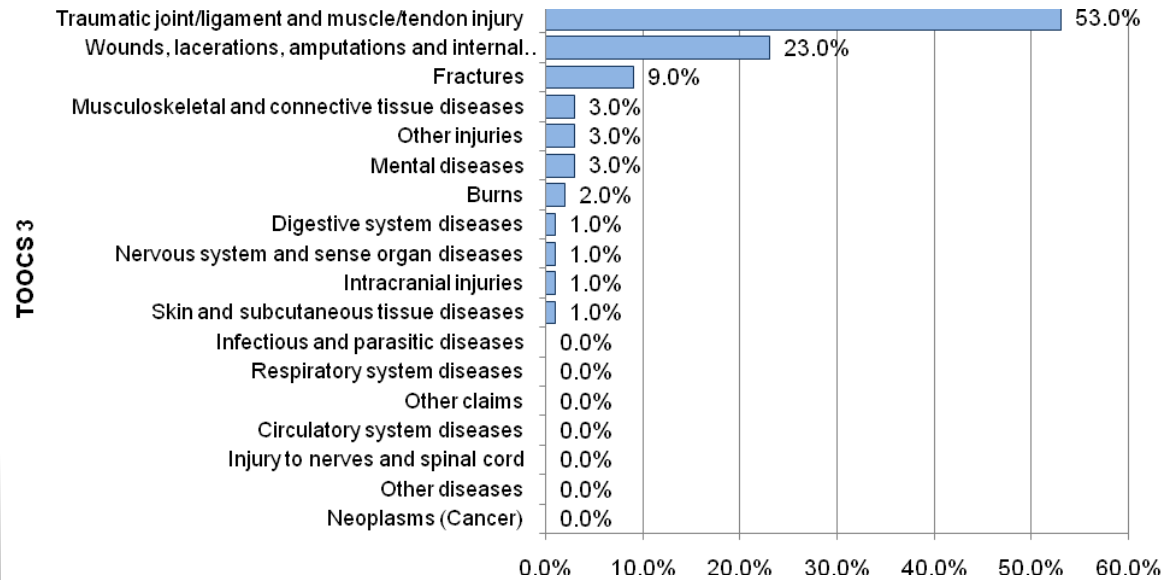


Types of Injuries and diseases

- Nature of injury group *Traumatic joint/ligament and muscle/tendon injury* recorded the highest proportion of work-related injuries during 2009-10p. These types of injuries were responsible for more than half of all incidences at 53% (or 8,823 incidents).
- The group *Wounds, lacerations, amputations and internal organ damage* recorded the second highest proportion of incidences at 23% (or 3,818).
- The bulk of incidences during 2009-10 are attributable to these two groups each recording frequency rates of 4.85 and 2.10 respectively.

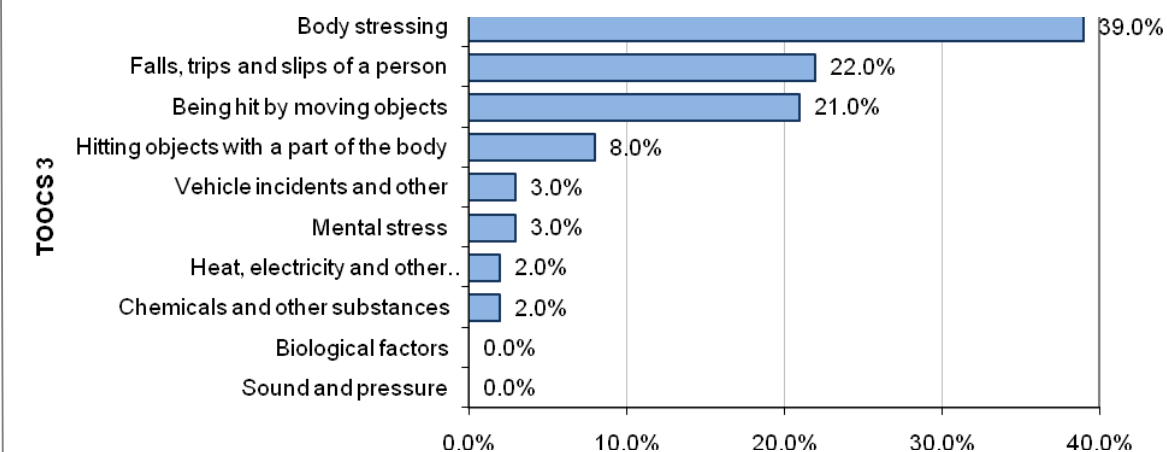
- Drilling down further to the subgroup classifications, the highest numbers of LTI/Ds were recorded against *Soft tissue injuries due to trauma or unknown mechanisms with insufficient information to code elsewhere* (6,745), *Laceration or open wound not involving traumatic amputation* (1,930) and *Contusion, bruising and superficial crushing* (1,564).

Proportion of LTI/Ds by nature of injury: 2009-10p



- The greatest proportion of all work-related lost time injuries in 2009-10p is attributable to the mechanism group *Body stressing*.
- Drilling down further to the subgroup classifications, the highest numbers of LTI/Ds were recorded against *Muscular stress while handling objects other than lifting, carrying or putting down* (3,723), *Falls on the same level* (2,448) and *Muscular stress while lifting, carrying or putting down objects* (1,905). The first and third ranked classifications mentioned belong to the *Body stressing* group.

Proportion of LTI/Ds by mechanism of injury: 2009-10p



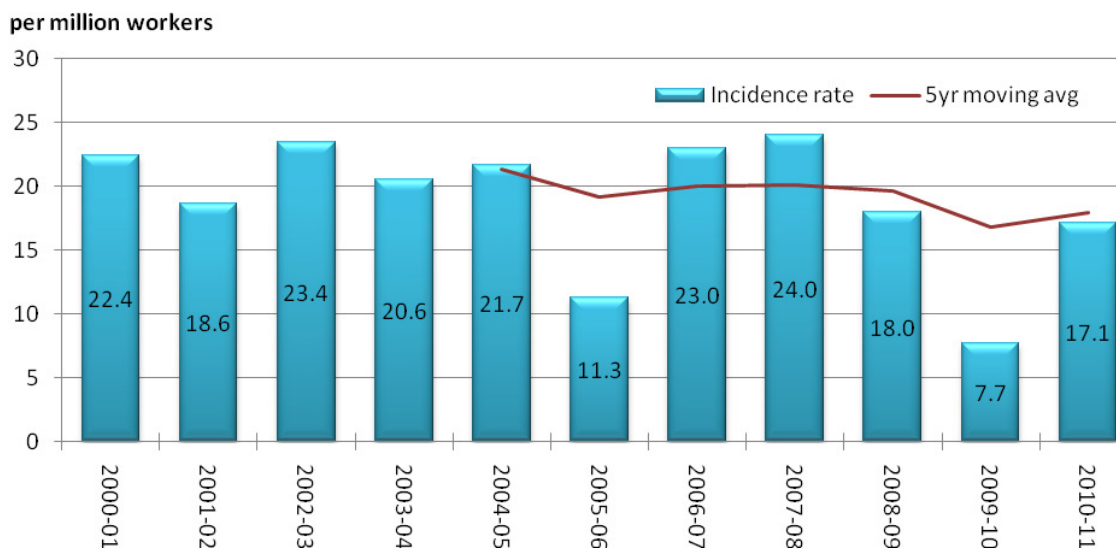
Traumatic work-related fatalities

Traumatic work-related fatalities data is collected by WorkSafe and covers all work-related deaths due to injury including self-employed workers and bystanders. Unlike workers' compensation claims data which has a one time lag due to the necessary maturity of claims (the latest preliminary data available being 2009-10); WorkSafe fatalities data are available to the present day, enabling the most recent year of data reporting, being 2010-11.

It is important to recognise that fatality rates (and numbers) are volatile and fluctuate considerably over time.

- Overall, a downward trend has occurred in fatality rates since the *Occupational Safety and Health Act 1984* came into effect in 1988-89, an 65.9% reduction recorded since that year.
- The number of work-related fatalities per million workers during 2010-11 was 17.1, a sharp increase from the 7.7 recorded in 2008-09.
- Due to the volatility of work related fatalities on an annual basis, averages over five years are used to provide clear trend data. Based on the most recent five year average data, an upward trend is apparent.
- The average fatality incidence rate for the five-year period from 2006-07 to 2010-11 is 18.0, compared to an average fatality incidence rate for the five-year period from 2005-06 to 2009-10 of 16.8 – a 6.9 per cent increase.
- The five-year average fatality incidence rate for the five-year period from 1996-97 to 2000-01 was 22.9.
- 21 traumatic work-related fatalities were recorded in Western Australia during 2010-11. 2009-10 recorded the lowest level of fatalities since records began in 1988-89 (nine fatalities). Such low levels are historically uncharacteristic.

Incidence rate for traumatic work-related fatalities in WA: 2000-01 to 2010-11



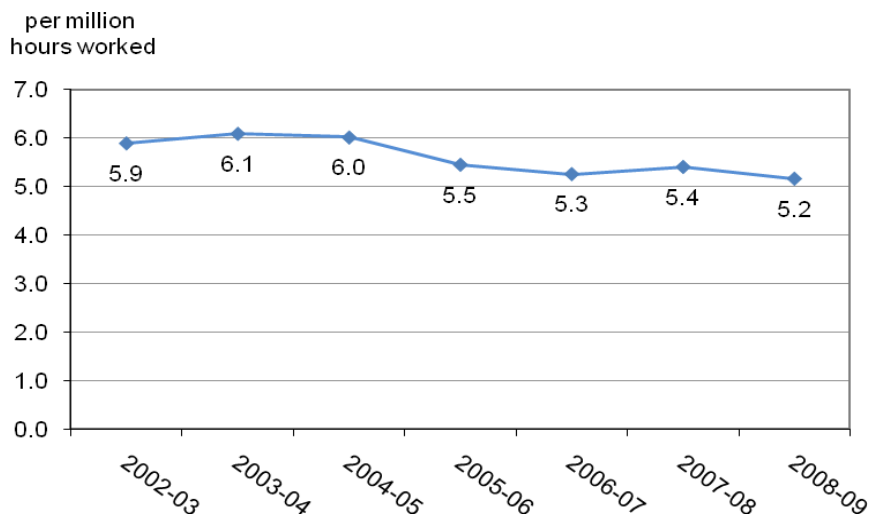
Occupational diseases

To 'prevent occupational disease more effectively' is one of five national priority action areas identified within the National OHS Strategy 2002-2012. Eight disease groups have been identified for monitoring. These are:

- respiratory disease;
- occupational cancers;
- contact dermatitis;
- infectious and parasitic diseases;
- cardiovascular disease;
- musculoskeletal disorders;
- mental disorders; and,
- noise induced hearing loss.

Many diseases, such as cancers, have long latency periods, while other diseases, such as asthma, the link between cause and effect can be difficult to establish. This may result in under-reporting of occupational diseases. Therefore data should be used as an indication only. Given the long latency periods and other factors associated with these conditions, 2009-10 preliminary data has been excluded.

Frequency rate of occupational diseases in WA: 2002-03 to 2008-09 (Incidences of five or more days lost from work)



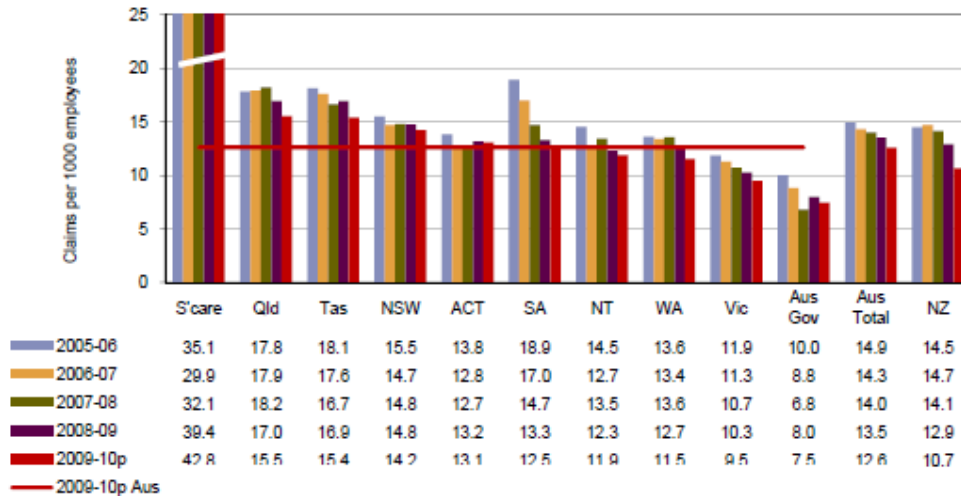
- The number of cases increased 10.2% during the seven year period (from 8,486 to 9,352). 2008-09 recorded the lowest frequency rate in the period and recorded the second highest number of cases after 2007-08.
- In terms of numbers during the seven year period from 2002-03 to 2008-09, reductions were recorded in most categories with the infectious and parasitic diseases recording a fall of 27.3%, mental disorders -12.5%, contact dermatitis -13.3% and cardiovascular disease (<8 incidences per year) -16.7%. Deafness and occupational cancer also recorded falls however, the figures are not reported due to the low number of cases per year.
- Increases were recorded in musculoskeletal disorders, up 11.6% and respiratory diseases although the figures are comparatively small at less than 12 incidences per year (up 14.3%).

National data

On a national level, Western Australia recorded the third lowest incidence and frequency rates in 2009-2010 (preliminary) for lost time injuries and diseases of five days lost or more. Western Australia has been consistently below the national rate since 2005-06.

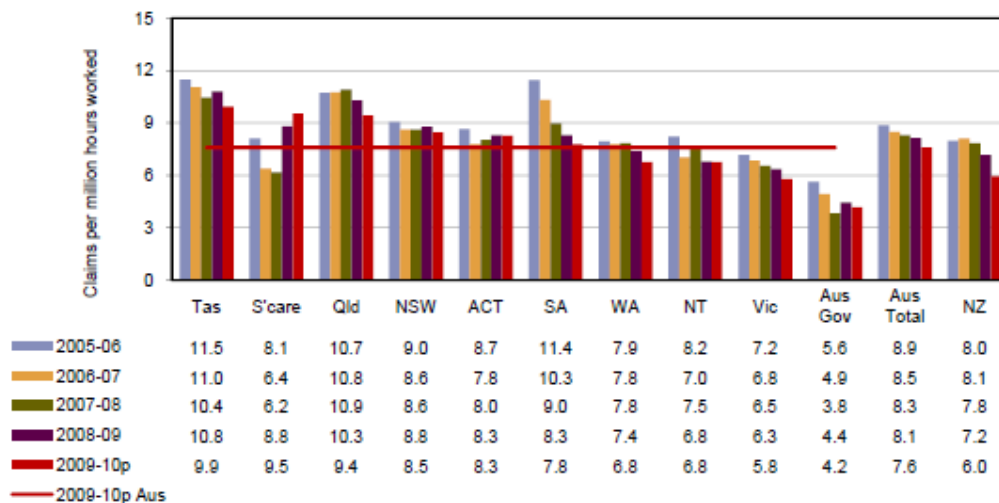
See the latest *Workplace Relations Ministers' Council Comparative Performance Monitoring Report* for further information www.safeworkaustralia.gov.au.

Indicator 5 – Incidence rates of serious* injury and disease claims by jurisdiction



*Includes all accepted workers' compensation claims involving temporary incapacity of one or more weeks plus all claims for fatality and permanent incapacity.

Indicator 6 – Frequency rates of serious* injury and disease claims by jurisdiction



* Includes all accepted workers' compensation claims involving temporary incapacity of one or more weeks plus all claims for fatality and permanent incapacity.